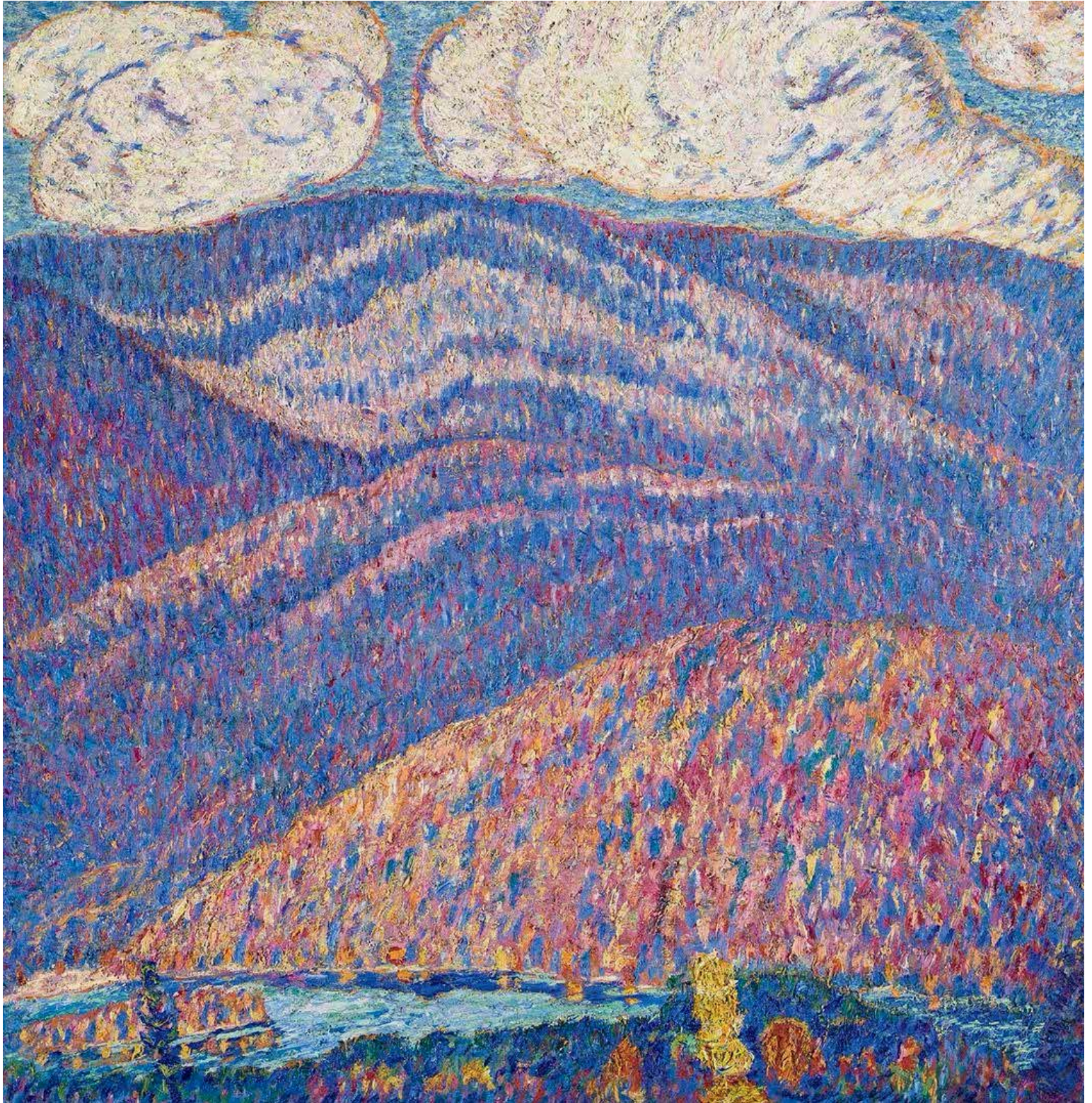


First (Park) Congregational Church

March 1, 2026

Second Sunday of Lent



Welcome to First (Park) Congregational Church!

While at Park Church if you need directions to the rest rooms, classrooms, fellowship spaces, or you need any help at all, please speak to a greeter or usher and we will do our best to assist you. The Sanctuary and Merriam Hall are equipped with the Loop System and other hearing-assist devices are available from an usher. The wifi password is parkchurchguest.

Our Congregational Commitments:

Vision Statement

...to build a community of relentless compassion and courageous hope, where all are seen and known, and the God of extravagant Love is revealed.

Inclusion Statement

As Jesus demonstrated by his life and teachings, we fully welcome into the life of Park Church and value all people regardless of beliefs or doubts, age, race, ethnicity, immigration status, sexual orientation, gender identity, physical, intellectual or emotional ability, or economic status. Park Church is a place where all are welcome and equal. We value and celebrate the rich diversity of all God's creation. *(adopted 2015, updated 2020 and 2025)*

Safe Church Statement

Park Church is a designated Safe Church of the United Church of Christ. Park Church is committed to create a safe environment for all members, attendees, and visitors, especially children and youth, and to address any concerns about abuse, harassment or misconduct.

Accessible to All (A2A) Statement

Park Church welcomes people of all abilities and disabilities into the full life of the congregation. Called to participate in Christ's ministry, we pledge to continue expanding our views and attitudes as we evolve to meet the needs of our church and community.

In this way, Park Church is fully committed to being *Accessible to All*. *(adopted 2025)*

Bulletin Cover Art: Marsden Hartley, *Hall of the Mountain King*, ca. 1908-1909, oil on canvas, Public domain, via Wikimedia Commons

To find out about what is happening in the coming weeks at Park Church, click the QR code. (please note that tulips are \$10.00)



Order of Worship for March 1, 2026

The + symbol indicates standing in body or in spirit.

Words in bold type are spoken or sung in unison.

Gathering Music

Phyllis Ann Miner, piano

Welcome

Rev. Darryl Kistler

Ringling of the Chimes

*The Chimes give us an opportunity to center ourselves as we
prepare our eyes, ears, hearts and minds to receive the message God has for us.*

Prelude

Steven B. Smith, organ

Adoration

Florence B. Price

Florence Beatrice Price (1887–1953) was a groundbreaking African-American composer and pianist. Notably, she is the first black woman to gain national status, having had her composition performed by a major American symphony orchestra in 1933.

+ Prayer of Invocation

Reading in Unison
Dee Casanova, liturgist

**God of unending love, heartbeat of all life,
you loved this word into being
with such love
as to birth yourself among us,
Love begotten as the Beloved.**

**Your presence does not separate but unites;
love does not push away, but embraces;
you do not condemn, but save.**

**Trusting this, we know
we are loved, never rejected.
Thanks be to God! Amen.**

1 God is our ref - uge and our strength, our
 2 Though hills a - mid the seas be cast, though
 3 Where God a - bides a riv - er flows; that
 4 Since God is in the midst of it, the

ev - er - pres - ent aid, and there - fore, though the
 foam - ing wa - ters roar, yea, though the might - y
 cit - y will re - joice. But na - tions fear and
 cit - y walls shall stand, se - cure and safe with

earth be moved, we will not be a - fraid;
 bil - lows shake the moun - tains on the shore.
 king - doms shake be - fore God's thun - dering voice.
 God's sure help, when trou - ble is at hand.

Moment for the Young and Young-at-Heart

Pastor Darryl

Stewardship Moment

Paula Ellison, Park Church Trustee

Scripture Reading

Matthew 5:38-48
Dee Casanova, liturgist

“You have heard that it was said, ‘An eye for an eye and a tooth for a tooth.’ But I say to you: Do not resist an evildoer. But if anyone strikes you on the right cheek, turn the other also, and if

anyone wants to sue you and take your shirt, give your coat as well, and if anyone forces you to go one mile, go also the second mile. Give to the one who asks of you, and do not refuse anyone who wants to borrow from you.

“You have heard that it was said, ‘You shall love your neighbor and hate your enemy.’ But I say to you: Love your enemies and pray for those who persecute you, so that you may be children of your Father in heaven, for he makes his sun rise on the evil and on the good and sends rain on the righteous and on the unrighteous. For if you love those who love you, what reward do you have? Do not even the tax collectors do the same? And if you greet only your brothers and sisters, what more are you doing than others? Do not even the gentiles do the same? Be perfect, therefore, as your heavenly Father is perfect.

One: The Word of God for the People of God...

All: Thanks be to God.

Sermon: *The Sermon on the Mount Part 2*

Pastor Darryl

Meditation

Steven B. Smith, organ

Blest Are They

David Haas

Sacrament of Holy Communion

Invitation to the Table and Words of Institution

Serving of the Bread and Cup

Steven B. Smith, organ

Our Father, Thou in Heaven Above

Paul Manz

Beautiful Savior

J. Woodman/R. Hebble

Prayer after Communion/Our Savior’s Prayer

concluding, the congregation prays in unison (continued...)

...Our Father/Mother/God, who art in heaven, hallowed be thy name. Thy kingdom come. Thy will be done on earth as it is in heaven. Give us this day our daily bread, and forgive us our debts as we forgive our debtors. And lead us not into temptation, but deliver us from evil. For thine is the kingdom, and the power, and the glory forever. Amen.

Invitation to Generosity and Stewardship

*Sing out, my soul, your songs of joy.
Sing as a happy bird will sing
beneath a rainbow's lovely arch in early spring.
Think not of death, strive not for gold.
Train up your mind to feel content,
What matters then how low your store?
What we enjoy, and not possess, makes rich or poor.
Sing out, my soul!*

- William Henry Davies (1871-1940)

+ Doxology

Praise God from Whom All Blessings Flow
Tune: OLD HUNDREDTH

*Praise God from whom all blessings flow;
Praise God, all creatures high and low;
Praise God in Jesus fully known:
Creator, Word, and Spirit one. Amen.*

+ Prayer of Dedication

Reading in Unison

God of New Beginnings, you call us to trust in what we cannot yet see, to follow where you lead, even when the road is unclear. In the shadows of our questions and the uncertainty of our understanding, you meet us with grace, not condemnation. Your love is not earned but freely given. Receive these gifts we offer, not as payment or proof, but as signs of our belief, our hope, and our gratitude. Use them to share your transforming love with a world still searching in the dark. Amen.

+ Closing Hymn - No. 684

Faith Begins by Letting Go
Tune: LUX PRIMA

1 Faith be - gins by let - ting go, giv - ing up what
2 Faith en - dures by hold - ing on, keep - ing mem - ory's
3 Faith ma - tures by reach - ing out, stretch - ing minds, en -

had seemed sure, tak - ing risks and press - ing on,
 roots a - live so that hope may bear its fruit;
 larg - ing hearts, shar - ing strug - gles, liv - ing prayer,

though the way feels less se - cure: pil - grim - age both
 prom - ise - fed, our souls will thrive, not through mer - it
 bind - ing up the bro - ken parts; till we find the

right and odd, trust - ing all our life to God.
 we pos - sess but by God's great faith - ful - ness.
 com - mon - place ripe with wit - ness to God's grace.

+ Common Commission

Reading in Unison

Let us now go forth into the world in peace; being of good courage; holding fast to that which is good; rendering to no one evil for evil; strengthening the faint hearted; supporting the weak; helping the afflicted; honoring all people; loving and serving the Lord and rejoicing in the power of the Holy Spirit.

Postlude

Steven B. Smith, organ
Fugue on "Beautiful Savior"
 Gordon Young

Thank you for joining us this morning!

We'd like to know that you were here, answer any questions you have, and support you in prayer. Please fill out the information card in the pew rack and place it in the offering plate.

Following Worship

Coffee Fellowship after worship in Merriam Hall

P.O.P. Table: Lenten Almsgiving

Youth Group meets after worship

Serving With You Today

Greeters: Scott Mannard, Carla Siegle, Deb McDonald

Ushers: Paul Davison, Colleen Czarnecki. Amy Rains, Bob Nichols, Richard Rowe
Doug Rubingh

Communion Servers: Pastor Darryl, Rev. Dr. Patrick Coyle, Chris Krive, Mark Jackson,
Karen Kelly, Mallika David, Tom Zvirgzds

Audio/Video: Sam Begay-Johnson, Andrew DeBoer, Bruce Robey

Flower Care: Ellie Pettee

The Sanctuary Flowers

The flowers on the Altar

In memory of Elaine Kelly's birthday.

Given by the Kelly family.

The flowers on the Children's Altar

In celebration of Emerson Eva Siegle, who was born on December 19, 2025.

Given by Carla and Rick Siegle.

If you would like to dedicate Sanctuary flowers, email Marcia Streeter. mabiti1@gmail.com

Joys and Concerns

Please pray for those navigating illness/treatment

Military Personnel: Jesse Campbell, Devon Goetz & Andy MacGregor, Matthew Quick.

Pastoral care is always available. Contact Pastor Darryl at dkistler@parkchurchgr.org.

Time and Talent Campaign Job Fair

Sunday, March 8 after worship in Merriam Hall

We are pleased to launch the 2026 Park Church Time & Talent Campaign!

You are asked to reflect on what you enjoy doing and where you feel called to participate in the life of Park Church and our greater community. Scan the QR code to read Pastor Darryl's introduction to the campaign below and fill out the google form in response. (Please note that the form has two pages. They are both important!)



Some of these opportunities are very familiar to you and some will be new. You are invited to a "Job Fair" on March 8 after worship in Merriam Hall to find out directly from organizers and supporters about many of the options there are for you to lend a hand. If you've always wondered who does what and how you can help, this is the day to find out. (There will be treats!)

The information form is simply a way for you to indicate interest in the existing and potential groups and initiatives at Park Church. It is an invitation to a conversation so you are encouraged to consider your interest in the broadest possible sense. You will be connected with those who can tell you more. Paper forms are available in the Narthex and can be left in the offering plate or in the church office.

Pi (Pie) Potluck and March Madness Selection

Sunday, March 15 after worship in Merriam Hall

Join us after worship on March 15 for a Pi (Pie) pot luck! We are never short of food at Park Church potlucks. There is no need to bring anything except yourselves but if you would like to contribute to the meal and if your last name begins with A-M, please bring savory pie. If your last name begins with N-Z, please bring a sweet pie...homemade, store-bought, whatever suits you. You will have the opportunity to join in the March Madness team selection. We understand no skills are required to participate.

Inquire and Connect Class

Sunday, March 29 11:45am-1:30pm in Spindler Dining Room

Would you like to know about the ministry and history of Park Church? Have you thought about becoming a member of Park Church? Join us for Inquire and Connect to learn more! At this informal get-together, members of the church will share their stories about membership, including ways to become involved and serve, within the church and in the wider community. Light refreshments with vegetarian and gluten-free options will be provided. New members will be received into the church family on Sunday, April 19, during the worship service.

Please RSVP to mbutler@parkchurchgr.org or by calling Marty in the church office, 616-459-3203, by Wednesday, March 25. All are welcome to attend even if you are unsure about membership.

2026 Lenten Almsgiving
Taking Care of EveryBODY
a collection for United Church Outreach Ministries



One of the classic disciplines of Lent is the giving of alms, an outward sign of Christian love for others. Almsgiving involves some type of sacrifice on behalf of the giver in order to provide for the needs of another, strengthening the bonds of community.

Basic necessities aren't basic when you can't afford them. Hygiene products are not a luxury; they are necessary for maintaining health and well-being, both physical and mental. Personal hygiene should be everyone's right. This is where the community can step in and make a difference. The 2026 Almsgiving recipient is United Church Outreach Ministries* with a focus on specific personal care items requested by UCOM clients.

You are invited to support the almsgiving by:

- giving a designated gift in the offering.
- giving a gift using the QR code.
- collecting requested items for distribution: All sizes of shampoo, conditioner, body lotion, bar soap, razors.

**We are grateful to the Park Church Women for their support of the Lenten Almsgiving and their selection of the recipient. The PCW Spring Thank Offering fundraiser has merged with Almsgiving. If you have traditionally supported the PCW Thank Offering, please consider giving to this effort.*

It's time again to order flowers for Easter

These are white tulips in a six-inch pot with a white foil pot-cover. The cost is \$10.00 per plant. You may place your order by calling the church office (616-459-3203), or by emailing mbutler@parkchurchgr.org. Order forms will also be available on the tables in the narthex.

Tulips will be displayed on Easter Sunday, April 5, and may be taken home after the service. Please designate if the plants are in memory or in honor of your loved one(s). The deadline to order is Wednesday, March 25. The business office asks that payment for tulips be made separately from weekly pledges or other donations to the church.

Music at Midday begins on March 10 (concerts begin at 12:15 and are free of charge.)

- 3/10 Dr. Larry Visser, Organ
- 3/17 Grand Rapids Christian High School, Candice Amey, Director
- 3/24 Karen Albert, mezzo-soprano, and Robert Byrens, piano
- 3/31 Easter Break
- 4/7 Caleb Wenzel and Friends
- 4/14 Perugino String Quartet
- 4/21 Outside Pocket with Greg Scheer
- 4/28 Eric Strand, organ
- 5/5 Bruce Robey and Friends

Coming Up @ Park Church

- Tues. March 3 at 6:30pm Board of Deacons meeting
- Wed. March 4 at 1:00pm Allinder Ten meeting
at 7:00pm Bible Study: World Religions
- Thurs. March 5 at 8:30am Men's Discussion Group
at 6:30pm Jubilosos! rehearsal
at 7:30pm Chancel Choir rehearsal
- Sun. March 8 at 10:30am Sanctuary Worship
Coffee Fellowship before and after worship in Merriam Hall
P.O.P. Table: Lenten Almsgiving
Time and Talent Job Fair in Merriam Hall after worship
- Tues. March 10 at 12:15pm Music at Midday: Dr. Larry Visser, organ
at 6:30pm Board of Trustees meeting
- Wed. March 11 at 10:00am Park Church Women board meeting
at 7:00pm Bible Study: World Religions
- Thurs. March 12 at 8:30am Men's Discussion Group
at 1:00pm Sow and Sews work day
at 6:30pm Jubilosos! rehearsal
at 7:00pm West Michigan Survivors of Suicide Loss Support Group
at 7:30pm Chancel Choir rehearsal
- Sun. March 15 at 10:30am Sanctuary Worship
Coffee Fellowship before worship in Merriam Hall
P. O. P. Table: Lenten Almsgiving
Pi Potluck and March Madness after worship in Merriam Hall



We are an Open and Affirming Congregation
No matter who you are,
or where you are on life's journey,
you are welcome here.

Ministerial and Office Staff:

Rev. Darryl Kistler, Senior Minister

Rev. Dr. Patrick Coyle, Minister of Music

Peter Smith, Spiritual Formation & Education Minister

Terrie Hunter, Congregational Life Coordinator

Julie Anderson, Finance Director

Camille DeBoer, Communications Coordinator

Robert Rieger, Lead Custodian

Marty Butler, Parish Life Assistant

Judi Stroh, Office Administrator & Event Coordinator

dkistler@parkchurchgr.org

pcoyle@parkchurchgr.org

psmith@parkchurchgr.org

thunter@parkchurchgr.org

janderson@parkchurchgr.org

cdeboer@parkchurchgr.org

rrieger@parkchurchgr.org

mbutler@parkchurchgr.org

jstroh@parkchurchgr.org

Office Hours: Monday - Thursday 9:00 - 3:00

10 E Park Pl. NE, Grand Rapids, MI 49503

616-459-3203

office@parkchurchgr.org

www.parkchurchgr.org

www.facebook.com/parkchurchgr

The wifi password is parkchurchguest.



Access the online donor and payment portal by using the camera on your phone and clicking the link that appears.